

BSG

Type explosion-proof distribution tank
(II B, II C)

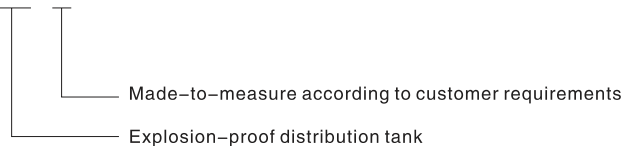


Application

- Can be used in hazardous areas: Zone 1 and Zone 2
- Can be used in explosive gas atmospheres of Category IIA, IIB and, II C where the temperature classification is T1 ~ T6.

Model implication

BSG - T



Technical parameters

- Implementing the standard : GB 3836.1、GB 3836.2、GB 3836.3、IEC60079
- Explosion-proof mark: Exd II BT4、Exde II CT4
- Rated voltage: AC 380/220V
- Current of main circuit : $\leq 630A$
- Branch current: $\leq 400A$
- Protection grade: IP65

BSG

Type explosion-proof distribution tank
(II B, II C)

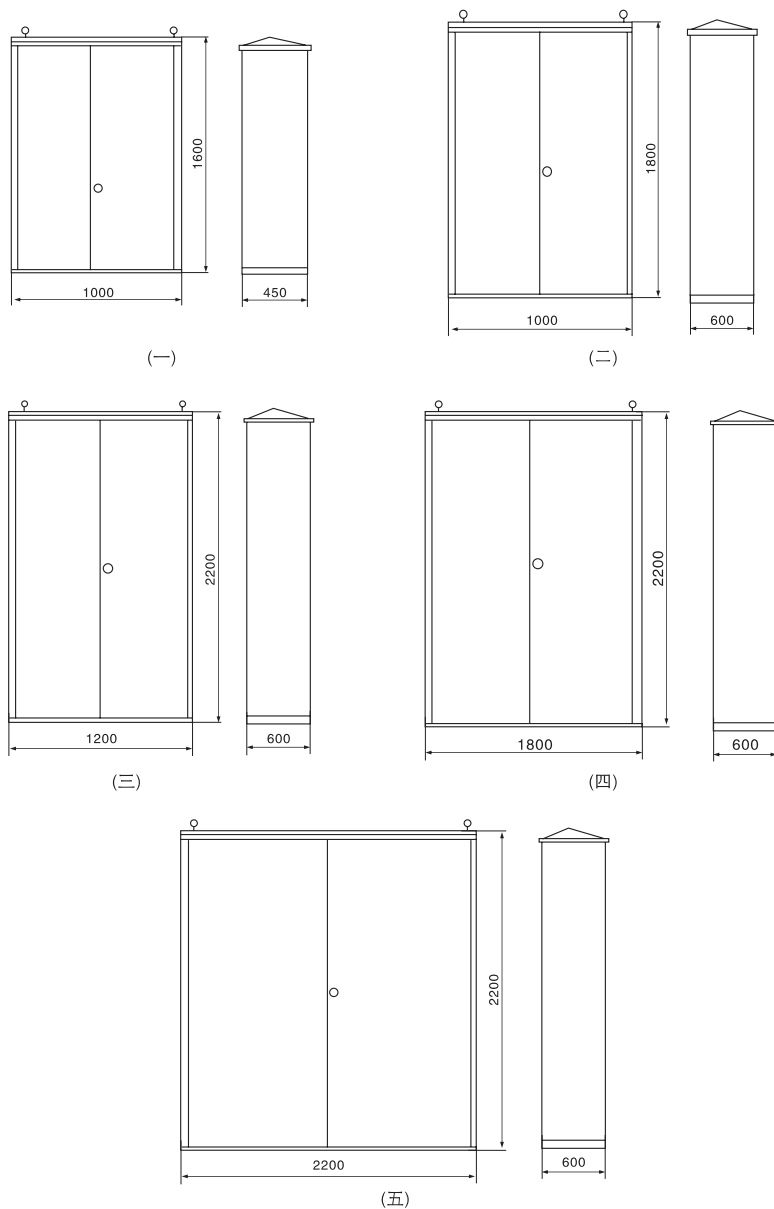
Features

- The housing is die cast in steel plates, with high voltage static plastic-sprayed surface .
- Inside will be installed explosion-proof electrical appliances which can be relatively selected according to offered drawings specified technical data and dimensions.
- It is available to be installed in flush plate. Directly operating or operating after opening is possible.
- The products have kinds of functions and can be ordered on according to practical thing examples:
 - ① Multi-circuit power (illumination) distribution box
By being made up of several explosion-proof breakers or power (illumination) distribution boxes and a few explosion-proof junctionboxes, the distribution box can transform distribute and control power and energy of 380V, 630V, 50Hz AC three phase electromagnet-system.
 - ② Multi-circuit electromagnet-starting distribution box
Through being made up of several explosion-proof electromagnetc starters or electromagnetic starting boxes, explosion-proof CB, operating post and explosion-proof junction box, the distribution system can transmit power and centrally control the motors of 380V, 50Hz AC three phase electrical system. The branch current can reach up to 160A to user's requirement so as to be controlled remotely. And the signal lamp. Voltmeter, ammeter, etccan be added as required.
 - ③ Multi-circuit voltage-reduced starting distribution box
Explosion-proof voltage-reduce starter is put in the box to unfrequently start the motors of 50Hz, 380V, 95KW and below 3-phase squirrel-case. It has the protections of short-circuit, phase-failure, overcurrent and motor-block. Being controlled manually, automatically or remotely is available.
 - ④ Meter-controlling, inspect-controlling
Through inner explosion-proof meter or auxiliary instrument, the parameter, pressure, temperature of circuit can be measured and inspected.
 - ⑤ Compexity type
Combine appropriate applicanes to user's requirement to meet the demands on sits. Panel's dimension is freely determined as required.

BSG

Type explosion-proof distribution tank
(II B, II C)

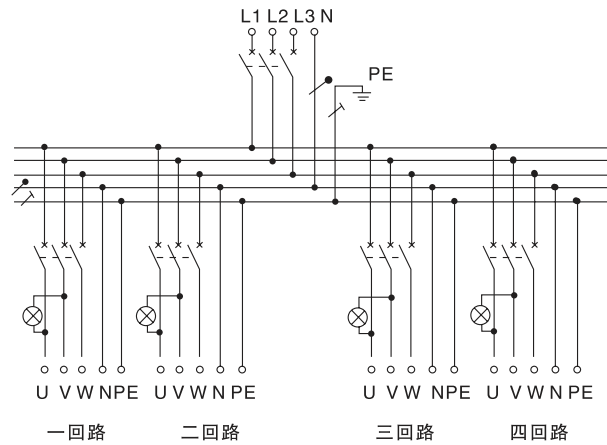
Outline and mounting example



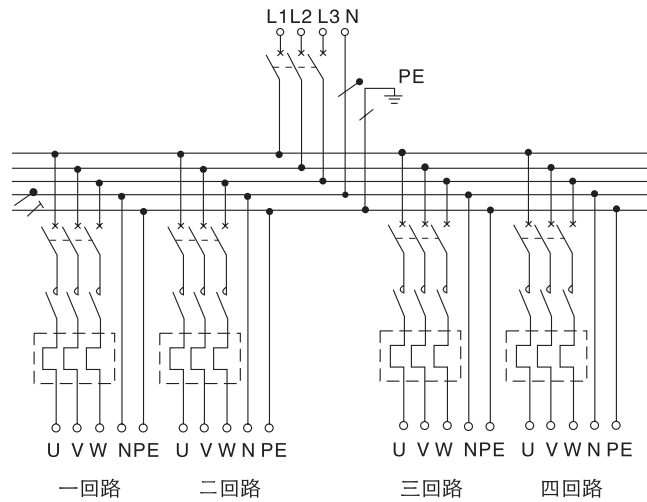
BSG

Type explosion-proof distribution tank
(II B, II C)

Electrical principle chart



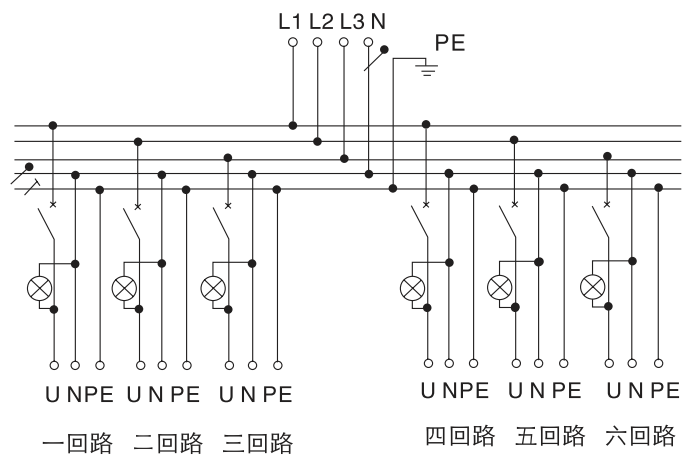
Power distribution tank



magnet starting distribution tank

BSG

Type explosion-proof distribution tank
(II B, II C)



Illumination distribution tank

Not ice if ordering

- Please note if need II C group;
- If users have special request, please offering electric system diagram.